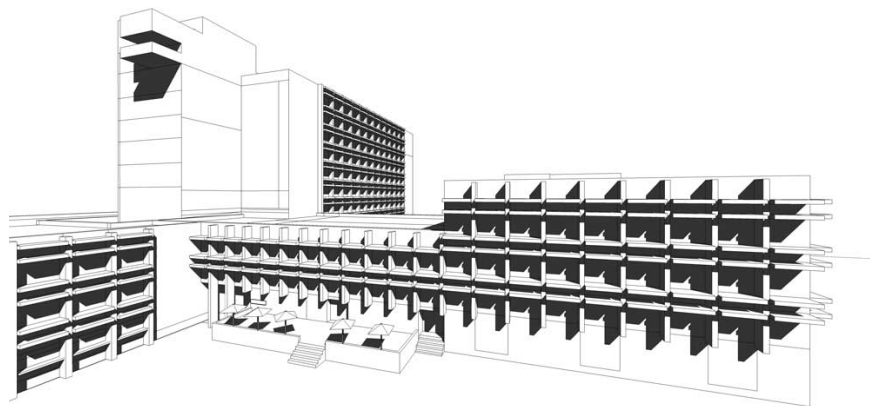


# Landscape Architecture Major Handbook 2023-24

Department of Landscape Architecture and Environmental Planning  
College of Environmental Design  
University of California Berkeley

For Students Admitted to University of California Berkeley Fall 2023 - Spring 2024



Download this handbook at: [ced.berkeley.edu/advising/undergraduate-advising/  
undergraduate-students/major-minor-requirements](https://ced.berkeley.edu/advising/undergraduate-advising/undergraduate-students/major-minor-requirements)

## **LANDSCAPE ARCHITECTURE AT BERKELEY**

The undergraduate curriculum in landscape architecture centers upon creative and ecologically tuned design, and introduces students to the breadth of knowledge common to the profession. This program leads to the B.A. degree in landscape architecture and provides the necessary education for students interested in entry-level professional practice.

At the heart of the undergraduate curriculum are three core studios: LD ARCH 101, LD ARCH 102, and LD ARCH 103. The core studios ensure that undergraduate students benefit from the department's full range of interests and expertise.

**Accreditation and Licensure.** The B.A. degree is certified by the State of California and counts as part of the education/experience requirement of the Uniform National Examination (U.N.E.) as well as for the Landscape Architects Registration Examination (L.A.R.E.) for licensure. Please visit the Landscape Architects Technical Committee at <http://www.latc.ca.gov/> and the Council of Landscape Architectural Registration Boards at <https://www.clarb.org/> for more information about licensure in California.

**Minors.** See the CED website for information on undergraduate minors offered by the Department of Landscape Architecture and Environmental Planning, as well as other minors available to landscape architecture majors.

## UNDERGRADUATE ADVISING

### FACULTY ADVISORS

#### Department Chair

**Professor Walter Hood**  
382C Bauer Wurster Hall #2000  
[wjean@berkeley.edu](mailto:wjean@berkeley.edu)

#### Undergraduate Major Head

**Professor Chip Sullivan**  
302 Bauer Wurster Hall  
[csully@berkeley.edu](mailto:csully@berkeley.edu)

**CED Associate Dean for Undergraduate Studies**, Associate Professor of Architecture, Associate Director of M.Des.

**Professor Kyle Steinfeld**  
345 Bauer Wurster Hall  
[ksteife@berkeley.edu](mailto:ksteife@berkeley.edu)

### STAFF ADVISORS

#### Office of Undergraduate Advising

250 Bauer Wurster Hall  
510-642-4943  
For general advising questions email:  
[cedadvising@berkeley.edu](mailto:cedadvising@berkeley.edu)  
Website:  
<https://ced.berkeley.edu/advising/undergraduate-advising>

#### Landscape Architecture Advisor

**Kristian Dawson**  
250 Bauer Wurster Hall  
[kristian.dawson@berkeley.edu](mailto:kristian.dawson@berkeley.edu)

#### Director of CED Undergraduate Advising

**Omar Ramirez**  
250 Bauer Wurster Hall  
[oramirez@berkeley.edu](mailto:oramirez@berkeley.edu)

#### College Evaluator (transfer work evaluation)

**Heather Grothjan (Peng)**  
250 Bauer Wurster  
[heather.grothjan@berkeley.edu](mailto:heather.grothjan@berkeley.edu)

#### CED Career Counseling

**Dinorah Meyer**  
703 Bauer Wurster Hall

## DEGREE REQUIREMENTS

### Summary of Degree Requirements

- A. University and Berkeley Campus Requirements
- B. CED College Requirements
- C. Landscape Architecture Major Requirements
- D. General Electives (optional to reach 120 units)
- E. Unit and Semester Requirements

#### A. University and Berkeley Campus Requirements

All undergraduate students at UC Berkeley must complete:

- Entry-Level Writing Requirement
- American History and Institutions
- American Cultures

#### B. CED College Requirements

1. Reading & Composition A & B. See the CED Advising website for more information on R&C course placement. Must be completed with a letter grade of C- or better. All undergraduates must complete the R&C requirement by the end of their fourth semester, or their enrollment will be blocked for the following semester.
2. Seven Course Breadth Requirement. Up to two CED courses or courses cross-listed with CED may be used to complete Seven Course Breadth. See paragraph below for detail.
  - Arts and Literature (A&L Breadth)
  - Biological Science (BIO SCI Breadth) Must be taken for a letter grade, choose one from approved list (see below under "Lower Division Major Requirements")
  - Historical Studies (HIST ST Breadth)
  - International Studies (INTL ST Breadth)
  - Philosophy and Values (PHIL & VAL Breadth)
  - Social and Behavioral Sciences (SOC & BHV SCI Breadth)
  - Physical Science (PHYS SCI Breadth)— Must be taken for a letter grade, choose one from approved list (see below under "Lower Division Major Requirements")

Only Lower Division ENV DES courses (ENV DES 1, ENV DES 5) and Lower Division Major Requirements may simultaneously fulfill Seven Course Breadth. A course used to fulfill either an Upper Division Major Requirement or the Upper Division CED Outside of Landscape Architecture Requirement may not also satisfy Seven Course Breadth. Upper Division CED courses that are not fulfilling another upper division requirement may fulfill Seven Course Breadth.

No more than two CED courses or courses cross-listed with CED may be used to complete Seven Course Breadth. No more than two courses from any one academic department may be used to satisfy breadth requirements.

A Seven Course Breadth class that is also being used to complete another CED requirement must be completed with a letter grade of C- or better.

Only one of the remaining Seven Course Breadth may be taken on a Passed/Not Passed basis.

You can see the breadth courses available on [classes.berkeley.edu](https://classes.berkeley.edu) by using the "Breadth Requirements" filter on the left-hand side of the page.

International Studies breadth may be satisfied by participation in the UC Education Abroad Program or a recognized equivalent program.

CED students may apply high school exam credit (Advanced Placement, International Baccalaureate, A-Level Exam) towards many of the above requirements. See the CED website section on High School Exam Credit for more information: <https://ced.berkeley.edu/advising/forms-documents>

3. Lower Division Environmental Design (2 courses total) Must be completed with a letter grade of C- or better.
  - ENV DES 1 People and Environmental Design
  - ENV DES 5 Cities and Sites

Students who have matriculated as first year students (not transfer students), must complete ENVDES 1 and ENVDES 5 at UC Berkeley.

Lower Division ENV DES courses (ENV DES 1, ENV DES 5) and Lower Division Major Requirements may simultaneously fulfill Seven Course Breadth. However, no more than two CED courses or courses cross-listed with CED may be used to complete Seven Course Breadth.

*Transfer students are exempt from the ENV DES 5 requirement.*

4. Upper Division College of Environmental Design Courses Outside of Landscape Architecture (3 courses total). Must be completed with a letter grade of C- or better. A course used to fulfill this requirement may **not** also be used to fulfill Seven Course Breadth.

Three Upper Division CED courses must be taken outside the landscape architecture department (nine units minimum). Each of the three courses must be at least two units and must be within the 100-299 course number range (197, 198, 199 are excluded). This requirement can be fulfilled with courses in Environmental Design, Visual Studies, Architecture, and City and Regional Planning.

Note: Students who have been away from the University for five or more years are held to the college and major requirements that are in place when they re-enroll at UCB.

### **C. Landscape Architecture Major Requirements**

1. Lower Division Major Requirements (3 courses):

*These courses must be completed with a letter grade of C- or better.* Courses taken to fulfill Lower Division Major Requirements may also be used to fulfill Seven Course Breadth.

- LD ARCH 1 Drawing a Green Future: Fundamentals of Visual Representation and Creativity
  - Students who have matriculated as first year students (not transfer students), must complete LD ARCH 1 at UC Berkeley.
- Physical Science (course also completes Physical Science breadth requirement) – Choose one from approved list:
  - CHEM 1A: General Chemistry
  - EPS 3 The Water Planet
  - EPS 7 Introduction to Climate Change
  - EPS 10 Earth's Greatest Volcanic Eruptions (as of now it is only going to be offered in Summer Sessions but that may change in the future)
  - EPS 20 Earthquakes in Your Backyard
  - EPS C20/L&S C70Y Earthquakes in Your Backyard
  - EPS 50 The Planet Earth

- EPS 80 Environmental Earth Sciences
- EPS 81 Atmospheres
- Physics 7A Physics for Scientists and Engineers
- Physics 8A Introductory Physics
- Physics 10 Descriptive Introduction to Physics
- Physics C10 Descriptive Introduction to Physics (Also listed as LS C70V)
- Biological Science (course also completes Biological Science breadth requirement) – Choose one from approved list:
  - ANTHRO 1 Introduction to Biological Anthropology
  - Biology 1B General Biology
  - ESPM 2 The Biosphere
  - ESPM 6 Environmental Biology \*prereq: 1 course in intro college biology preferred
  - ESPM C10 Environmental Issues (Also listed as LS C30V)
  - ESPM 40 Insects and Human Society
  - ESPM 42 Natural History of Insects
  - ESPM 105A Sierra Nevada Ecology \*prereq: 8 units of Biological Science or consent of instructor
  - INTEGBI C32 Bioinspired Design (Also listed as LS C30Z)
  - INTEGBI 42 Primate Biology
  - LD ARCH 12 Environmental Science for Sustainable Development
  - NUSCTX 11 Introduction to Toxicology
  - PLANTBI 40 The (Secret) Life of Plants – Plant and Microbial
- Additional courses that can count for either Biological Science **OR** Physical Science (*not both*):
  - EPS 82: Oceans
  - EPS N82: Introduction to Oceans
  - ESPM 15: Introduction to Environmental Sciences
  - GEOG 40 Introduction to Earth System Science

CED students may apply high school exam credit (Advanced Placement, International Baccalaureate, A-Level Exam) towards some of the above lower division major requirements. See the CED website section on High School Exam Credit for more information:

<https://ced.berkeley.edu/advising/forms-documents>

2. Upper Division Major Requirements, 11 courses (42 units):

You must earn a 2.0 average in the Upper Division Major Requirements. A course used to fulfill an Upper Division Major Requirement may **not** also be used to fulfill Seven Course Breadth.

- LD ARCH 101 (5) Fundamentals of Landscape Design (Topographic Form and Design)
- LD ARCH 102 (5) Case Studies in Landscape Design (Design Development Studio)
- LD ARCH 103 (5) Energy, Fantasy, and Form
- LD ARCH C110A (4) Ecological Analysis (*formerly LD ARCH 110 + 110L*)
- LD ARCH 112 (4) Landscape Plants: Identification and Use
- LD ARCH 120 (3) Topographic Form and Design Technology
- LD ARCH 121 (4) Design in Detail: Introduction to Landscape Materials and Construction
- LD ARCH 133 (3) Drawn from the Field (*formerly LD ARCH 134A*)\*
- LD ARCH 134B (3) Drawing Workshop II
- LD ARCH 135 (3) Sacred Landscapes
- LD ARCH 170 (3) History and Literature of Landscape Architecture

*\*LD ARCH 133 can be satisfied for students who completed LD ARCH 1 at UC Berkeley*

Note: Students who have been away from the University for five or more years are held to the college and major requirements that are in place when they re-enroll at UCB.

## D. General Electives

Students may need to take additional courses to reach the 120 units required for graduation.

## E. Unit and Semester Requirements

The Bachelor of Arts degree in the College of Environmental Design requires the successful completion of at least 120 semester units of courses subject to certain rules:

- A maximum of 16 units of Special Studies coursework (courses numbered 97, 98, 99, 197, 198, or 199) is allowed towards the 120 units; a maximum of four is allowed in a given semester; only upper division students (60 or more units completed) may enroll in 197, 198, or 199 coursework.
- A maximum of 4 units of Physical Education from any school attended will count towards the 120 units.
- Students may receive unit credit for courses graded P (including P/NP units taken through EAP) up to a limit of one-third of the total units taken and passed on the Berkeley campus at the time of graduation.
- No more than 60 units from a single department can be used towards this 120 minimum.

### Unit Minimum

CED students must enroll in at least 12 units each fall and spring semester. (Students entering UCB with no prior units would need to complete 15 units per semester to graduate in four years.)

### Semester Limit

Students admitted as first-year students must graduate within eight fall/spring semesters at UC Berkeley. Students admitted as transfer students must graduate within four fall/spring semesters at UC Berkeley. EAP and UCDC count towards this semester limit; summer session, UC Extension, and study abroad through non-UC programs do not. Students approved for simultaneous degrees in two colleges may be granted an additional semester.

### Senior Residence Requirement

After reaching senior status (with 90 semester units earned), students must be registered in the College of Environmental Design and must complete at least 24 of the remaining 30 units in at least two semesters in residence at UC Berkeley as CED students. To count as residence, a semester must consist of at least six passed units.

Students may use [Berkeley Summer Sessions](#) to satisfy one semester of the Senior Residence Requirement, provided that six units of course work are completed. Units completed through UC Berkeley "W" web-based courses do apply towards Senior Residence.

*Excluded from Senior Residence:* [Intercampus Visitor Program](#), [Education Abroad Program \(UCEAP\)](#), [UC Berkeley-Washington Program \(UCDC\)](#), Berkeley Summer Sessions completed abroad, UC Berkeley Extension courses (X and XB), and non-UC Berkeley online classes.

### Modified Senior Residence Requirement

Participants in the [UC Berkeley-Washington Program \(UCDC\)](#); a fall, spring or summer [UC Education Abroad Program](#) (UCEAP); Berkeley Summer Abroad; or the Berkeley Global Internship program may meet the Modified Senior Residence Requirement by completing 24 of their final 60 semester units (excluding EAP or UC Extension) in residence. Note that these programs must consist of at least six passed units to meet the requirement. At least 12 of the 24 units must be completed after senior status (90 units) is reached.

Most students automatically fulfill the residence requirement by attending classes here for four years. In general, there is no need to be concerned about this requirement, unless you go abroad for a semester or year or want to take courses at another institution or through University Extension during your senior year. In these cases, you should make an appointment to see an advisor to determine how you can meet the Senior Residence Requirement.

## Fulfilling Requirements with Transfer Coursework

Students may use transfer work, including courses taken via Study Abroad, to fulfill CED requirements, within the following limits (please consult your major advisor for more information):

- Upper Division **Major** Requirements: Up to two courses taken elsewhere may be applied, if deemed transferable by the UC Berkeley Central Evaluation Unit and approved by the faculty advisor for your major.
- Upper Division **CED Outside the Major**: Up to two courses taken elsewhere may be applied, if deemed transferable by the UC Berkeley Central Evaluation Unit and approved by the college.
- Upper Division **CED Minor** Requirements: Up to two courses taken elsewhere may be applied, if deemed transferable by the UC Berkeley Central Evaluation Unit and approved by the faculty advisor for your minor.
- **CED Breadth Requirements**: All requirements can be potentially fulfilled by courses taken elsewhere, if deemed transferable by the UC Berkeley Central Evaluation Unit and approved for breadth by the college (courses must be at least three units each).

To submit a request, please refer to the [CED Forms & Documents](#) page and complete the form located under Transfer Credit Evaluation: "CED Course Substitution Process-Current Students (Including Study Abroad)."

## Concurrent Enrollment

Concurrent enrollment for enrolled Berkeley students is defined as a student being enrolled in courses at UC Berkeley during a Fall or Spring semester, while also being enrolled in courses at another school such as a California community college. Students who wish to take courses concurrently must seek approval from CED Advising **four weeks prior to the first day of instruction**. Students who do not have approval from CED Advising will not be approved to post transferable units to their UC Berkeley academic transcript. Only summer session enrollment does not require approval from CED Advising.

## GRADE REQUIREMENTS

- A 2.0 UC GPA is required for graduation.
- A 2.0 GPA within the major is required at time of graduation.

## GRADUATING WITH HONORS

- To graduate with distinction, you must meet the grade-point average (GPA) requirement and complete at least 50 units in residence at Berkeley (this may include UCB Extension XB units and up to 20 units from UCDC or EAP), of which 43 units must be letter-graded (not including physical education activities courses). *Transfer students must make sure they complete 50 units at Berkeley to qualify for honors.*
- Your GPA in all letter-graded courses taken at Berkeley must be equal to or higher than the GPA established for honors in the year in which you graduate. These GPA cut-offs change slightly each year and are posted on the CED website.



## DEADLINES AND POLICIES

See the CED advising website for the most up-to-date information:  
<https://ced.berkeley.edu/advising/undergraduate-advising>

## CED MINORS

Minors offered by the College of Environmental Design include:

- Architecture
- City & Regional Planning
- Environmental Design and Urbanism in Developing Countries
- Geospatial Information Science and Technology (College of Natural Resources for paperwork and advising)
- History & Theory of Landscape Architecture & Environmental Planning (not available for students declared in the Landscape Architecture major)
- History of the Built Environment
- Social & Cultural Factors in Design
- Sustainable Design

Minors generally consist of five upper division courses plus any lower division prerequisites to those courses. Any course taken for your CED minor may also be used to fulfill major and upper division CED non-major requirements. Courses used to fulfill a breadth requirement may also be used to satisfy a CED minor requirement.

The “CED Minor Declaration Form” is available in the Minors section of Major & Minor Requirement of the [CED website](#). The form is required to declare a minor. You must add/declare your minor no later than the term before your final semester. CED students may pursue minors in any of the other undergraduate schools and colleges at UC Berkeley.

## ACADEMIC PROGRESS REPORT (APR)

Track your degree progress via your Academic Progress Report in [CalCentral](#) (calcentral.berkeley.edu). If you notice any errors in your Academic Progress Report, notify your CED advisor immediately.

## HEALTH AND WELLNESS

CED values the health and wellness of our students. We encourage all students to take care of themselves as they learn and progress through the academic rigor of their respective majors. To take advantage of personal counseling or coaching services, students can meet with mental health counselors at the following on-campus offices:

University Health Services (Tang Center): <https://uhs.berkeley.edu/counseling>

Drop-In Counseling at EOP: <https://uhs.berkeley.edu/counseling/satellite/chavez>

## COST OF ATTENDANCE ADJUSTMENT (FINANCIAL AID BUDGET APPEALS)

Students are allowed to submit a request to the Financial Aid Office to increase the size of their standard budget for certain expenses that are above the standard amounts: housing, a computer (once every three years), uninsured medical/dental/optical expenses, and child care.

In addition, CED students who are enrolled in a studio course may submit a **Cost of Attendance Adjustment request (“budget appeal”)** for additional loan or work-study to help cover studio-related expenses. To request additional financial aid to help with studio expenses, you will need to include with your appeal the “Estimated Undergrad Studio Expenses for Financial Aid Appeals” document, available on the **CED website**: <https://ced.berkeley.edu/advising/forms-documents>

For more information on the Cost of Attendance Adjustment, see <http://financialaid.berkeley.edu/cost-attendance-adjustment>.

### **CED FEE WAIVERS**

CED has a limited amount of funding available for facility access fee waivers each year. CED students who are eligible to receive either a Pell Grant or Dream Act Scholarship may apply for a waiver by the established deadlines. Questions regarding facility access fee waivers about email CED advising (cedadvising@berkeley.edu).

### **UC BERKELEY FOOD PANTRY**

The Food Pantry provides emergency non perishable food to UC Berkeley students while they explore campus food security resources. <http://pantry.asuc.org/>

### **CED PRIZES AND AWARDS**

One of the many financial resources available to CED students is the Prizes and Awards program. For more information see <https://ced.berkeley.edu/resources/awards-scholarships-and-fellowships>.

## GRADUATION PLAN FIRST-YEAR

“First-year” refers to students who have graduated high school and have taken no college coursework past the summer immediately following high school.

### FIRST-YEAR

Fall Semester	Units	Spring Semester	Units
<b>ENV DES 1: Introduction to Environmental Design</b>	<b>3</b>	<b>ENV DES 5: Designing Cities and Landscapes for Equity and Ecology</b>	4
Bio Sci for Major (Breadth #1: BIO SCI)	3-4	Reading & Composition A	4-6
Breadth #2	3-4	Phys Sci for Major (Breadth #3: PHYS SCI)	3-4
University Elective, if needed	3-4	University Elective, if needed	1-2
<b>TOTAL</b>	<b>12-15</b>	<b>TOTAL</b>	<b>12-16</b>

### SOPHOMORE

Fall Semester	Units	Spring Semester	Units
Reading & Composition B	4	<b>LD ARCH 1: Drawing a Green Future</b>	4
Breadth #4	3-4	Breadth #6	3-4
Breadth #5	3-4	Breadth #7	3-4
University Elective, if needed	4	University Elective, if needed	2-3
<b>TOTAL</b>	<b>12-14</b>	<b>TOTAL</b>	<b>12-15</b>

### JUNIOR

Fall Semester	Units	Spring Semester	Units
<b>LD ARCH 101: Fundamentals of Landscape Design</b>	<b>5</b>	<b>LD ARCH 102: Case Studies in Landscape Design</b>	5
<b>LD ARCH C110A: Ecological Analysis</b>	<b>4</b>	<b>LD ARCH 112: Landscape Plants</b>	4
<b>LD ARCH 134B (3) Drawing Workshop II</b>	<b>3</b>	<b>LD ARCH 170: History and Literature of Landscape Architecture</b>	3
American Cultures or university elective, if needed	1-4	CED Upper Div Non-Major #1	2-4
<b>TOTAL</b>	<b>13-6</b>	<b>TOTAL</b>	<b>14-16</b>

### SENIOR

Fall Semester	Units	Spring Semester	Units
<b>LD ARCH 103: Energy, Fantasy, and Form</b>	<b>5</b>	<b>LD ARCH 121: Design in Detail: Intro to Landscape Materials and Construction</b>	4
<b>LD ARCH 120: Topographic Form and Design Technology</b>	<b>3</b>	<b>LD ARCH 135: Sacred Landscapes</b>	3
CED Upper Div Non-Major #2	2-4	CED Upper Div Non-Major #3	2-4
American Cultures or university elective, if needed	1-4	LD ARCH 160 or LD ARCH 111 (recommended)	3
<b>TOTAL</b>	<b>12-16</b>	<b>TOTAL</b>	<b>12-14</b>

NOTE: Students must complete 120 units to graduate.

While each student’s plan will vary depending on interests, we recommend student’s follow the plan above. To make academic progress towards your degree, **take the courses in bold during the term listed**. If you plan to take these courses in a different term, connect with a CED advisor to discuss your options.

See your advisor if you are interested in applying for graduate school, studying abroad, attending summer school, pursuing a minor or second major, etc. See the end of the Major Handbook for a sample plan for study abroad.

## GRADUATION PLAN TRANSFER

“Transfer” refers to students who have graduated high school and *have* taken college coursework past the summer immediately following high school.

### JUNIOR YEAR

Fall Semester	Units	Spring Semester	Units
<b>LD ARCH 101: Fundamentals of Landscape Design</b>	5	<b>LD ARCH 102: Case Studies in Landscape Design</b>	5
<b>LD ARCH C110A: Ecological Analysis</b>	4	<b>LD ARCH 112: Landscape Plants</b>	4
<b>^LD ARCH 133 (3) Drawn from the Field</b>	3	<b>LD ARCH 170: History and Literature of Landscape Architecture</b>	3
<b>LD ARCH 134B (3) Drawing Workshop II</b>	3	CED Upper Div Non-Major #1	2-4
<b>TOTAL</b>	<b>15</b>	<b>TOTAL</b>	<b>14-16</b>

<sup>^</sup>LDARCH 1 at UCB satisfies LDARCH 133

### SENIOR YEAR

Fall Semester	Units	Spring Semester	Units
<b>LD ARCH 103: Energy, Fantasy, and Form</b>	5	<b>LD ARCH 121: Design in Detail: Intro to Landscape Materials and Construction</b>	4
<b>LD ARCH 120: Topographic Form and Design Technology</b>	3	<b>LD ARCH 135: Sacred Landscapes</b>	3
CED Upper Div Non-Major #2	2-4	CED Upper Div Non-Major #3	2-4
American Cultures or university elective, if needed	1-4	LD ARCH 160 or LD ARCH 111 (recommended)	3
<b>TOTAL</b>	<b>12-16</b>	<b>TOTAL</b>	<b>12-14</b>

NOTE: Students must complete 120 units to graduate.

While each student’s plan will vary depending on interests, we recommend student’s follow the plan above. To make academic progress towards your degree, **take the courses in bold during the term listed**. If you plan to take these courses in a different term, connect with a CED advisor to discuss your options.

See your advisor if you are interested in applying for graduate school, studying abroad, attending summer school, pursuing a minor or second major, etc. See the end of the Major Handbook for a sample plan for study abroad.

## STUDY ABROAD

View the CED Study Abroad Academic Planning website to learn more about studying abroad:

<https://ced.berkeley.edu/academics/ced-study-abroad/academic-planning>

If you intend to study abroad, connect with a CED advisor to determine feasibility and to create an academic plan.

## SAMPLE ACADEMIC PLAN FOR SOPHOMORE YEAR STUDY ABROAD

First-year students planning to study abroad in their sophomore year are responsible for making sure their program does not conflict with course requirements being taken during the summer at UC Berkeley.

Fall Semester (1st Year)		Units	Spring Semester (1st Year)		Units		
ENV DES 1: Introduction to Environmental Design		4-6	LD ARCH 1: Drawing a Green Future		4		
Bio Sci for Major (Breadth #1: BIO SCI)		3	ENV DES 5: Designing Cities and Landscapes for Equity and Ecology		4		
Breadth #2		3-4	Reading & Composition A		4-6		
University Elective, if needed		2-4	University Elective, if needed		4		
TOTAL		12-13	TOTAL		13-15		
Fall Semester (2nd Year)		Units	SPRING Semester (ABROAD)		Units	Summer	Units
Reading & Composition B		4	Breadth #5		3-4	Remaining breadth or LDARCH 1	
Phys Sci for Major (Breadth #3: PHYS SCI)		3-4	Breadth #6		3-4		
Breadth #4		3-4	Breadth #7 (International Studies - no course)		0		
University Elective if needed		1-3	University Electives		4-6		
TOTAL		13-15	TOTAL		12		